

SEM-TOUCH_V1

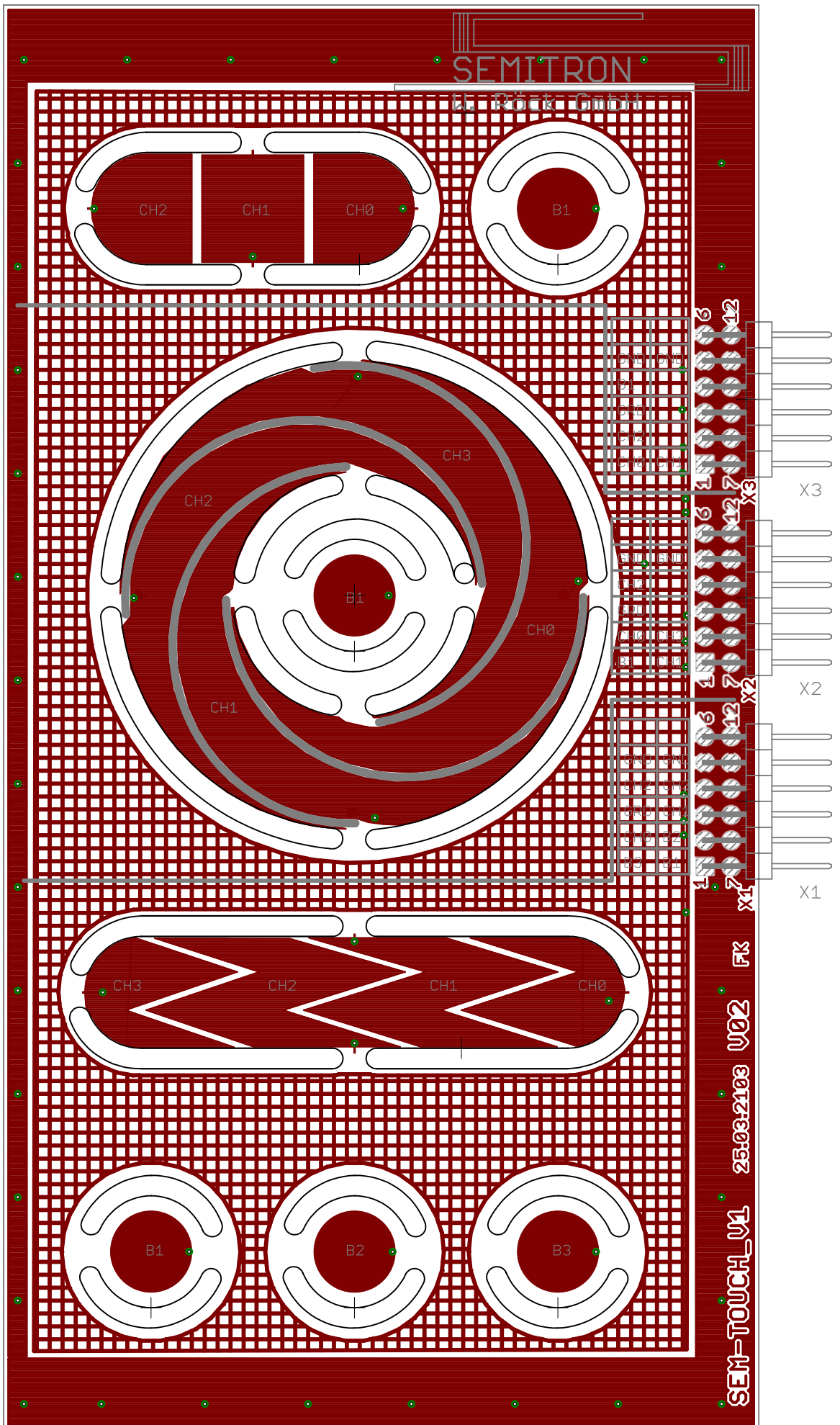
TITLE: Touch

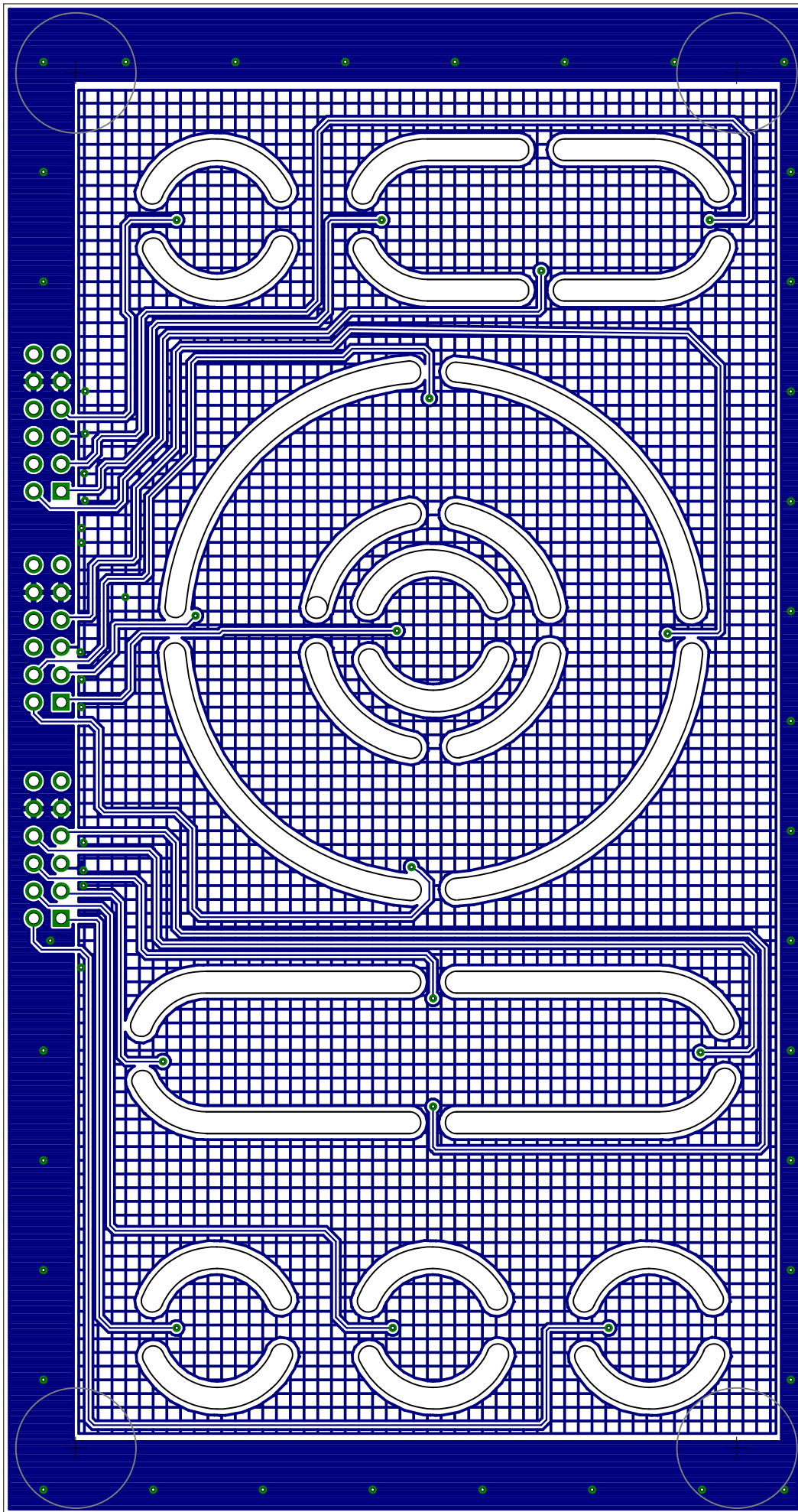
Document Number:
Franz Kraus - Semitron W. Röck GmbH

REV:
V02

Date: 25.03.2013 09:59:40

Sheet: 1/1





Stückliste exportiert aus C:/Users/fkraus/Documents/eagle/Touch/Touch.sch am 25.03.2013 10:06:22

Part	Value	Device	Package	Description
U\$3	GUMMIFUSS-11.18X5.08	GUMMIFUSS-11.18X5.08	GUMMIFUSD11.18X5.08	BUMPON HEMISPHERE .44X.20 CLEARGUMMIFUSS-11.18X5,08 Digikey: SJ5303-7-ND
U\$4	GUMMIFUSS-11.18X5.08	GUMMIFUSS-11.18X5.08	GUMMIFUSD11.18X5.08	BUMPON HEMISPHERE .44X.20 CLEARGUMMIFUSS-11.18X5,08 Digikey: SJ5303-7-ND
U\$5	GUMMIFUSS-11.18X5.08	GUMMIFUSS-11.18X5.08	GUMMIFUSD11.18X5.08	BUMPON HEMISPHERE .44X.20 CLEARGUMMIFUSS-11.18X5,08 Digikey: SJ5303-7-ND
U\$6	GUMMIFUSS-11.18X5.08	GUMMIFUSS-11.18X5.08	GUMMIFUSD11.18X5.08	BUMPON HEMISPHERE .44X.20 CLEARGUMMIFUSS-11.18X5,08 Digikey: SJ5303-7-ND
X1	PMODSTECKERGEW	PMODSTECKERGEW	PMOD2X6STECKER	CONN HEADER 12POS .100 R/A 15AU68021-212HLF, Digikey: 609-3345-ND
X2	PMODSTECKERGEW	PMODSTECKERGEW	PMOD2X6STECKER	CONN HEADER 12POS .100 R/A 15AU68021-212HLF, Digikey: 609-3345-ND
X3	PMODSTECKERGEW	PMODSTECKERGEW	PMOD2X6STECKER	CONN HEADER 12POS .100 R/A 15AU68021-212HLF, Digikey: 609-3345-ND