

*1:
 3,3V Ausgangsspannung: R2 = 45k/1%
 5,0V Ausgangsspannung: R2 = 73,2k/1%

SEM-ADP2441-XXX

TITLE: SADP2441_U05

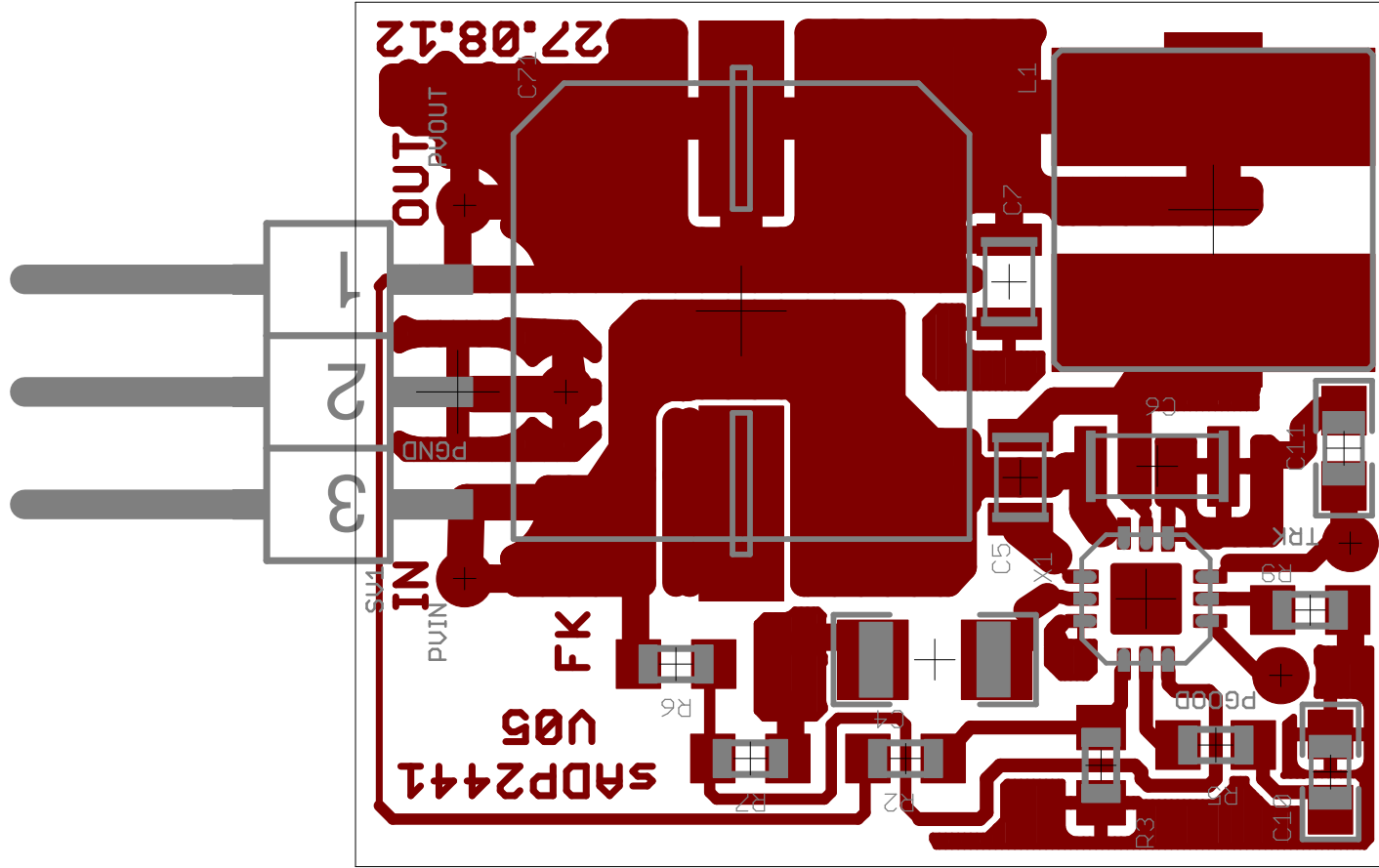
Document Number:
Semitron W. Roeck GmbH - F. Kraus

REV:
0.5

Date: 27.08.2012 10:22:14

Sheet: 1/1





Stückliste exportiert aus C:/Users/fkraus/Documents/eagle/sADP244x/SADP2441_V05.sch am 27.08.2012 09:25:22

Bestückungsvariante: 5V Ausgangsspannung

Bauteil	Wert	Device	Package	Description
C4	1uF/50V	GRM31CR71H105KA61L	C1206	CAP CER 1UF 50V X7R 1206, GRM31CR71H105KA61L DigiKey: 490-3908-1-ND
C5	10nF/50V	C2012X7R1H103K	C2012	CAP CER 10000PF 50V 10% X7R 0805, C2012X7R1H103K Digikey: 445-1348-1-ND
C6	4u7F/50V	C3216Y5V1H475Z	C3216	CAP CER 4.7UF 50V Y5V 1206, C3216Y5V1H475Z Digikey: 445-3472-1-ND
C7	10uF/10V	C2012Y5V1A106Z	C2012	CAP CER 10UF 10V Y5V 0805, C2012Y5V1A106Z Digikey: 445-1371-1-ND
C10	180pF/50V	06035C181KAT2A.DEV	C0603	CAP CER 180PF 50V 10% X7R 0603, 06035C181KAT2ADigiKey: 478-1206-1-ND
C11	100nF/ 25V	CC0603KRX7R8BB104	C0603	CAP CER 0.1UF 25V 10% X7R 0603, CC0603KRX7R8BB104 DigiKey: 311-1341-1-ND
C71	100uF/16V	94SVP107X0016F8	94SVPF8	OS-CON 100uF 16volts 20%, 94SVP107X0016F8 Mouser: 75-94SVP107X0016F8
L1	ASPI-0602S-150M	ASPI-0602S-150M	L7373	INDUCTOR POWER 15UH 0602 SMD, ASPI-0602S-150M-T Digikey: ASPI-0602S-150M-TCT-ND
R2	73,2k/1%	MCR03EZPFX	R0603	
R3	10k/1%	MCR03EZPFX	R0603	
R5	88,7k/1%	MCR03EZPFX	R0603	
R6	1k/1%	MCR03EZPFX	R0603	
R7	NC	MCR03EZPFX	R0603	
R9	187k/1%	MCR03EZPFX	R0603	
SV1		MA03-1W	MA03-1W	1/2 x CONN HEADER 6POS .100" R/A GOLD, 90121-0766 Digikey: WM8112-ND
X1	ADP2441ARDZ	ADP2441ARDZ	LFCSP12	



Stückliste exportiert aus C:/Users/fkraus/Documents/eagle/sADP244x/SADP2441_V05.sch am 27.08.2012 09:26:55

Bestückungsvariante: 3,3V Ausgangsspannung

Bauteil	Wert	Device	Package	Description
C4	1uF/50V	GRM31CR71H105KA61L	C1206	CAP CER 1UF 50V X7R 1206, GRM31CR71H105KA61L DigiKey: 490-3908-1-ND
C5	10nF/50V	C2012X7R1H103K	C2012	CAP CER 10000PF 50V 10% X7R 0805, C2012X7R1H103K Digikey: 445-1348-1-ND
C6	4u7F/50V	C3216Y5V1H475Z	C3216	CAP CER 4.7UF 50V Y5V 1206, C3216Y5V1H475Z Digikey: 445-3472-1-ND
C7	10uF/10V	C2012Y5V1A106Z	C2012	CAP CER 10UF 10V Y5V 0805, C2012Y5V1A106Z Digikey: 445-1371-1-ND
C10	180pF/50V	06035C181KAT2A.DEV	C0603	CAP CER 180PF 50V 10% X7R 0603, 06035C181KAT2ADigiKey: 478-1206-1-ND
C11	100nF/ 25V	CC0603KRX7R8BB104	C0603	CAP CER 0.1UF 25V 10% X7R 0603, CC0603KRX7R8BB104 DigiKey: 311-1341-1-ND
C71	100uF/16V	94SVP107X0016F8	94SVPF8	OS-CON 100uF 16volts 20%, 94SVP107X0016F8 Mouser: 75-94SVP107X0016F8
L1	ASPI-0602S-150M	ASPI-0602S-150M	L7373	INDUCTOR POWER 15UH 0602 SMD, ASPI-0602S-150M-T Digikey: ASPI-0602S-150M-TCT-ND
R2	45k/1%	MCR03EZPFX	R0603	
R3	10k/1%	MCR03EZPFX	R0603	
R5	88,7k/1%	MCR03EZPFX	R0603	
R6	1k/1%	MCR03EZPFX	R0603	
R7	NC	MCR03EZPFX	R0603	
R9	187k/1%	MCR03EZPFX	R0603	
SV1		MA03-1W	MA03-1W	1/2 x CONN HEADER 6POS .100" R/A GOLD, 90121-0766 Digikey: WM8112-ND
X1	ADP2441ARDZ	ADP2441ARDZ	LFCSP12	

